

# Surftest SJ-410

## Series 178 - Portable Surface Roughness Testers SJ-411 / 412

### Optional accessories

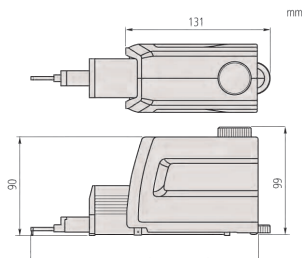
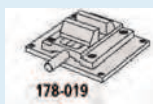
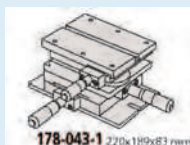
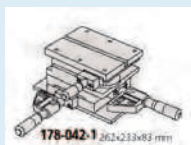
No.	Description
null	
02AZD790D	Connecting cable U-Wave
936937	Data cable (1 m)
965014	Data cable (2 m)
264-012-10	Input tool USB: IT-012U
178-019	Precision vice
12BAL402	Touch Panel Protection
<b>Stands</b>	
178-039	Granite stand
998291	Precision V-block
12AAB358	Cylinder attachment ø15 - 60 mm
<b>Step specimen</b>	
178-604	Roughness specimen 0,5/3 µm
178-605	Roughness specimen 1 µm
178-610	Step gauge (1, 2, 5, 10 µm)
178-611	Reference step specimen
<b>Tables</b>	
178-042-1	Digimatic XY leveling table 25x25 mm
178-043-1	XY leveling table 25x25 mm
178-048	Leveling table D.A.T.
178-049	Digital XY leveling table
178-047	Three-axis adjustment table

### Consumable spares

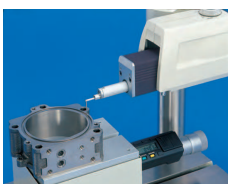
No.	Description
12AAB355	Nosepiece
178-601	Roughness specimen 3 µm
12BAG834	Touch pen
12BAL402	Touch Panel Protection
12AAA876	Printer paper (5 rolls)
12AAN046	Battery
<b>For 0.75 mN models</b>	
178-396-2	Detector 0,75 mN
12AAC731	Stylus 2 µm, angle 60°
357651	AC Adapter 9V
<b>For 4 mN models</b>	
178-397-2	Detector 4 mN
12AAB403	Stylus 5 µm, angle 90°
<b>For inch/mm models</b>	
178-602	Roughness specimen

### Optional accessories for Inch

No.	Description
178-612	Step gauge 2, 10 µm
178-053-1	XY levelling table 1x1"
178-052-1	Digital XY levelling table 1x1"



SJ-412: 234 mm (SJ-411:207,5 mm)  
Drive unit



Deep groove measurement



Upside down measurement



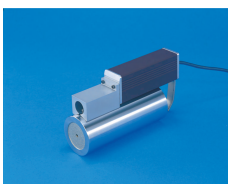
R-surface measurement



Optional:  
Autoset unit 178-010  
X-axes adjustment 178-020  
Tilting adjustment unit 178-030



Scope of delivery



12AAB358



178-048  
130x100 mm



178-039