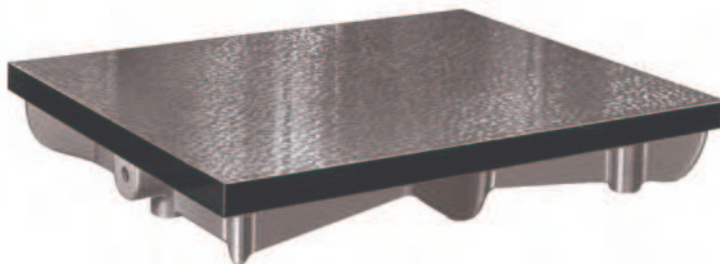


Cast Iron Surface Plates

Series 902

- A ribbed design is used for rigidity with minimum weight, and a special cast iron that confers a high degree of wear resistance.
- Working surface finished to DIN 876 according to grade. Outside edges milled clean.



902-304

Accuracy Grade 1

No.	Dimensions mm L x W x H	Mass kg
902-301*	300 x 300 x 85 mm	15
902-302*	400 x 400 x 90 mm	35
902-303*	500 x 400 x 100 mm	40
902-304*	600 x 500 x 120 mm	65
902-305*	800 x 500 x 140 mm	95
902-306*	1000 x 750 x 170 mm	210
902-307*	1200 x 800 x 180 mm	230
902-308*	1500 x 1000 x 200 mm	490
902-309*	2000 x 1000 x 220 mm	780

Accuracy Grade 3

No.	Dimensions mm L x W x H	Mass kg
902-101	300 x 300 x 85 mm	15
902-102*	400 x 400 x 90 mm	35
902-103*	500 x 400 x 100 mm	40
902-104	600 x 500 x 120 mm	65
902-105	800 x 500 x 140 mm	95
902-106*	1000 x 750 x 170 mm	210
902-107	1200 x 800 x 180 mm	230
902-108*	1500 x 1000 x 200 mm	490
902-109*	2000 x 1000 x 220 mm	780

Specifications

Accuracy	According to DIN 876 Grade 1 : fine scraped Grade 3 : fine planed
----------	---