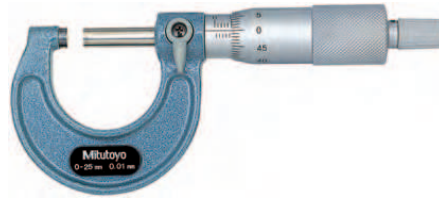


Outside Micrometer Inch

Series 103

- Lightweight workshop design.



Inch

Graduation 0,0001" / With ratchet stop

No.	Range	Accuracy	L mm	a mm	b mm	c mm	Mass g
103-131	0 - 1"	±0.0001"	30.3	2.8	9	28	175
103-132	1 - 2"	±0.0001"	55.3	2.8	10	38	215

Inch

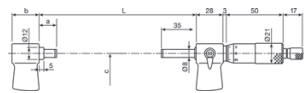
Graduation 0,0001" / With friction thimble

No.	Range	Accuracy	L mm	a mm	b mm	c mm	Mass g
103-135	0 - 1"	±0.0001"	30.3	2.8	9	28	175
103-136	1 - 2"	±0.0001"	55.3	2.8	10	38	215

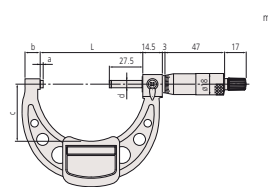
Inch

Graduation 0,001" / With ratchet stop

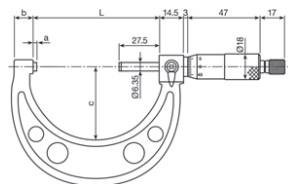
No.	Range	Accuracy	L mm	a mm	b mm	c mm	d mm	Mass g
103-177	0 - 1"	±0.0001"	30.3	2.8	9	28	6.35	175
103-178	1 - 2"	±0.0001"	55.3	2.8	10	35	6.35	215
103-179	2 - 3"	±0.0001"	80.3	2.8	12	49	6.35	315
103-180	3 - 4"	±0.00015"	105.3	2.8	14	60	6.35	375
103-181	4 - 5"	±0.00015"	132.8	5.3	17	76	6.35	515
103-182	5 - 6"	±0.00015"	158.2	5.7	19	90	6.35	665
103-183	6 - 7"	±0.0002"	183.6	6.1	20	102	6.35	720
103-184	7 - 8"	±0.0002"	208.8	6.3	19	115	6.35	920
103-185	8 - 9"	±0.0002"	234.2	6.7	18	127	6.35	1,080
103-186	9 - 10"	±0.00025"	258	5.5	18	139	6.35	1,255
103-187	10 - 11"	±0.00025"	284	6.5	18	152	6.35	1,405
103-188	11 - 12"	±0.00025"	309	6.5	18	166	6.35	1,565
103-189	12 - 13"	±0.0003"	353	18	28	187	8	1,985
103-190	13 - 14"	±0.0003"	378	18	28	199	8	2,155
103-191	14 - 15"	±0.0003"	403	18	28	212	8	2,305
103-192	15 - 16"	±0.00035"	428	18	28	224	8	2,455
103-193	16 - 17"	±0.00035"	453	18	28	236	8	2,715
103-194	17 - 18"	±0.00035"	478	18	28	248	8	2,965
103-195	18 - 19"	±0.0004"	503	18	28	261	8	3,215
103-196	19 - 20"	±0.0004"	528	18	28	273	8	3,450



Models over 12"



Models 3" to 12"



Models up to 3"

Specifications

Accuracy	Refer to the list of specifications
Graduation	0.001" / 0.0001"
Scales	Thimble and sleeve satin chrome finish
Flatness	0.000024" for models up to 12" 0.00004" for models over 12"
Parallelism	[0.00008+0.00004(L/4)]"
Measuring surfaces	Carbide tipped, micro-lap finish
Frame	Enamelled
Measuring spindle	with spindle lock, 0.025" pitch
Measuring force	5-10 N (from 4" upward : 5-15 N)
Delivered	Including box, setting standard (from 1" upward), key



Only for 0-1" and 1-2"