

Laser Scan Micrometer

Series 544

LSM-9506

Bench Top Type Non-contact Measuring System

- Measurement system with integrated display for easy bench-top inspection.
- A statistical calculation function is provided.
- Includes standard RS-232C interface and data output interface.



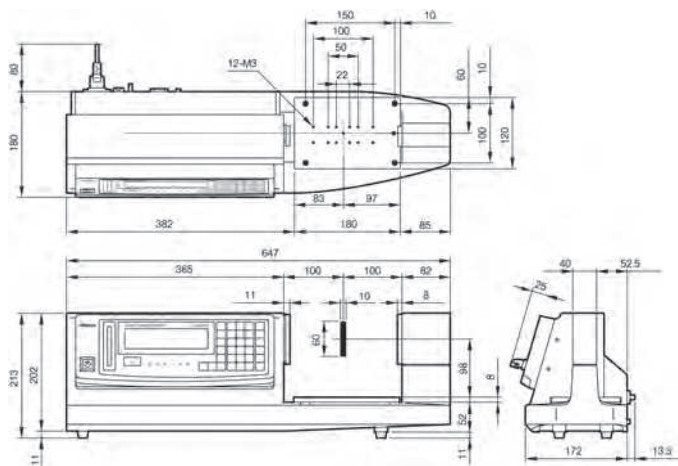
LSM-9506

Metric

No.	Range	Resolution (selectable)
544-115D	0,5-60 mm	0,00005-0,1 mm

Inch/Metric

No.	Range	Resolution (selectable)	Remarks
544-116D*	0,5-60 mm / 0.02-2.36"	0,00005-0,1 mm / 0.000002-0.005"	
544-116E*	0,5-60 mm / 0.02-2.36"	0,00005-0,1 mm / 0.000002-0.005"	UK only



Refer to the LSM brochure

Functions	Series 544
GO/±NG judgement	●
Multi-limit judgement	●
Sample Measurement	●
Statistical calculation	●
ZERO/SET	●
PRESET	●
Group judgement	●
Workpiece position display	●
Dual-gauge calibration	●
Transparent object measurement	●
Automatic measurement	●
Abnormal data elimination	●
Data Output	●
OFFSET	●

Specifications

Linearity at 20°C *1	±2,5 µm
Repeatability (±2 σ)	±0,6 µm / 24 µinch
Positional error *2	±2,5 µm
Measuring region	10 x 60 mm
Laser wavelength	650 nm, Visible
Scanning rate	1600 scans/s
Scanning speed	226 m/s
Applicable laser standards	IEC
Main display	16-digit fluorescent tube
Interface units equipped	RS-232C, Digimatic, Foot Switch
Power supply	100-240VAC, 40VA, 50/60Hz

*1 At the centre of the measuring region

*2 Potential measurement error due to variation in workpiece position within the measuring region