

Linear Scale AT113

Standard type

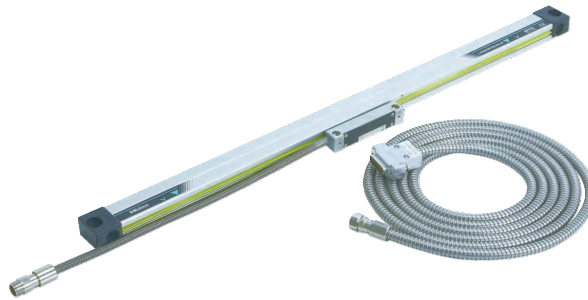
Series 539 - Range 100-1500mm

Specifications

Effective range (L0)	100 - 1500 mm
Accuracy at 20°C	(5+5L/1000) μm L = Effective range (mm)
Output waveform	Two 90° phase-shifted sinusoidal signals
Max. drive speed	120 m/min
Signal period	20 μm
Scale reference points	every 50 mm
Operating temperature	0°C to 45°C
Dust/Water protection level	IP53 (with normal installation)

Optional accessories

No.	Description
09AAA033A	Extension cable (2 m)
09AAA033B	Extension cable (5 m)
09AAA033C	Extension cable (7 m)
174-173D	KA-Counter 2 Axis
174-173E	KA-Counter 2 axis UK only
174-175D	KA-Counter 3 axes
174-175E	KA-Counter 3 axes UK only
174-147D	KLD200 Counter 4-step limit signal output
174-147E	KLD200 Counter KLD200 Counter 4-step limit signal output UK only



539-201-30

No.	Effective range	L ¹ mm	L ² mm	L ³ mm	L ⁴ mm	L ⁵ mm	L ⁶ mm	L ⁷ mm	Cable length	Mass kg
539-201-30*	100 mm/4"	120	258	242	276				3,5 m	0.9
539-202-30*	150 mm/6"	170	308	292	326				3,5 m	0.9
539-203-30	200 mm/8"	220	358	342	376				3,5 m	0.9
539-204-30*	250 mm/10"	270	408	392	426				3,5 m	1
539-205-30*	300 mm/12"	330	468	452	486				3,5 m	1
539-206-30*	350 mm/14"	380	518	502	536				3,5 m	1.1
539-207-30*	400 mm/16"	430	568	552	586				3,5 m	1.1
539-208-30*	450 mm/18"	480	618	602	636				3,5 m	1.2
539-209-30*	500 mm/20"	540	678	662	696	339	331		3,5 m	1.3
539-211-30*	600 mm/24"	640	778	762	796	389	381		3,5 m	1.3
539-213-30*	700 mm/28"	740	878	862	896	439	431		3,5 m	1.3
539-214-30*	750 mm/30"	780	918	902	936	459	451		3,5 m	1.4
539-215-30*	800 mm/32"	840	978	962	996	489	481		3,5 m	1.4
539-216-30*	900 mm/36"	940	1078	1062	1096	539	531		3,5 m	1.4
539-217-30*	1000 mm/40"	1040	1178	1162	1196	589	581		5 m	1.9
539-218-30*	1100 mm/44"	1140	1278	1262	1296			430	5 m	1.9
539-219-30*	1200 mm/48"	1240	1378	1362	1396			460	5 m	2
539-220-30*	1300 mm/52"	1340	1478	1462	1496			490	5 m	2.2
539-221-30*	1400 mm/56"	1440	1578	1562	1596			530	5 m	2.2
539-222-30*	1500 mm/60"	1540	1678	1662	1696			560	5 m	2.2

Legend

- L0 Effective range
- L1 Travel range
- L2-L3 Mount interval
- L4 Overall length
- L5-L7 Support bracket position



Refer to the DRO System leaflet for more details.

