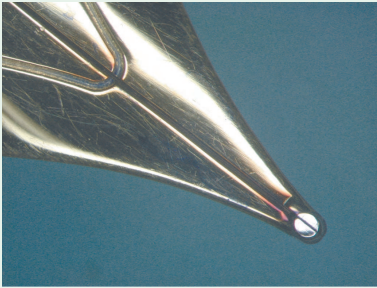
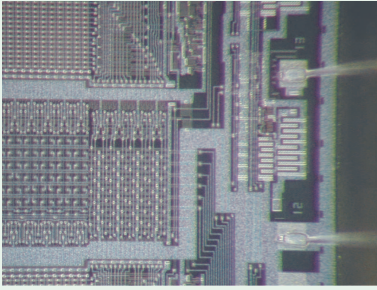


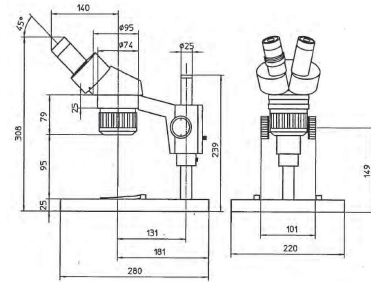
MSM-400 Stereo Microscope

Series 377 - MSM-412 and MSM-465 - Stereo microscope without illumination

- Bright, sharp images with real depth are recreated with high resolution and excellent colour fidelity, thus minimizing eye fatigue while increasing inspection efficiency and productivity.
- Using the horizontal focusing wheels mounted on both sides of the unit, you can quickly bring the object into focus regardless of whether you're right or left handed.



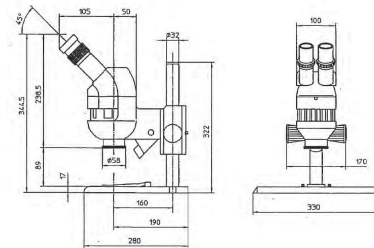
377-925K



377-925k



377-965K



377-966

Model	MSM-412	MSM-465
No.	377-925K	377-965K
Total magnification	10X, 20X	6X, 12X, 25X, 50X
Optical tube	Binocular	Binocular
Interpupillary distance (adjustable)	54 - 76 mm	54 - 76 mm
Eyepiece (optional)	WF5X/22, WF10X/20 (standard), WF15X/13, WF20X/10	WF6,25X/23, WF10X/23 (standard), WF15X/17,6, WF20X/13,4, WF32X/10
Objective lens	1X, 2X Turret, two stage	1.2X, 2.5X, 5X Turret, four stage
Auxiliary objective (optional)	-	0.6X, 1.2X, 2.5X, 5X
Total magnification of objective	2.5X to 60X	3.75X to 320X
Working distance of objective	95 mm	89 mm
Height adjustment range	44 mm	50 mm
Max. workpiece height	93 mm	95 mm
Mass (kg)	4.9	6.3