

SpinArm-Apex

Series 195 - Multi-axis Portable Coordinate Measuring System

- Compact and lightweight for easy transporting
- Brake function
- Counterbalanced for easy / extended operation
- Wireless communication including Laser Scanner for improved mobility
- Thermal compensation
- Automatic probe recognition

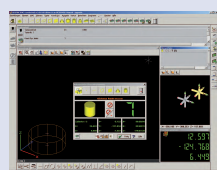
Specifications

Brake
PC communication

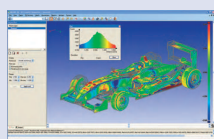
Electromagnetic
USB / WIFI



SurfaceMeasure



MCOSMOS



MSURF-M



SpinArm

This product is not for use in the United States of America or for export into the United States of America.

No.	Model	Ø Measuring range [mm]	Number of axis	Repeatability	Point-to-point distance accuracy ¹
02AMA164	SpinArm-Apex 367S	3600	7	± 0,110 mm	± 0,165 mm
02AMA165	SpinArm-Apex 307S	3000	7	± 0,090 mm	± 0,135 mm
02AMA166	SpinArm-Apex 247S	2400	7	± 0,055 mm	± 0,080 mm
02AMA172	SpinArm-Apex 366S	3600	6	± 0,100 mm	± 0,135 mm
02AMA173	SpinArm-Apex 360S	3000	6	± 0,080 mm	± 0,100 mm
02AMA174	SpinArm-Apex 246S	2400	6	± 0,050 mm	± 0,065 mm
02AMA175	SpinArm-Apex 186S	1800	6	± 0,040 mm	± 0,055 mm

¹ Inspection method is conformed to Mitutoyo standard.