

Quick Image

Series 361

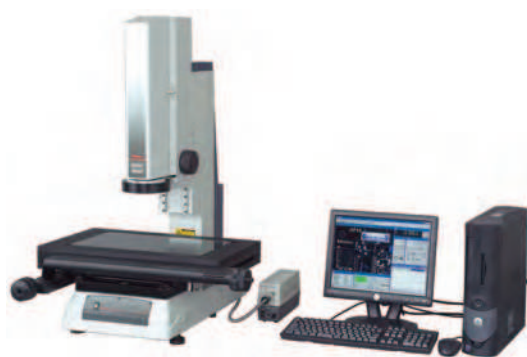
Non-contact 2D Vision Measuring System

Quick Image is a new concept in 2D vision measuring instruments and provides unique features for improving measurement efficiency.

- Long focal depth and wide field of view.
- Double telecentric optical system.
- Mega-pixel colour CCD camera.
- Large-quadrant LED ring light.



QI-A 2010B



QI-B 4020B

QI-A models

Model	QI-A1010B	QI-A2010B	QI-A2017B	QI-A3017B	QI-A4020B
No.	361-822-1EU 361-822-1E	361-823-1EU 361-823-1E	361-824-1EU 361-824-1E	361-825-1EU 361-825-1E	361-826-1EU 361-826-1E
Travelling range (X-, Y-axis)	100 x 100 mm	200 x 100 mm	200 x 170 mm	300 x 170 mm	400 x 200 mm
Travelling range (Z-axis)	100 mm	100 mm	100 mm	100 mm	100 mm
Stage glass size	170 x 170 mm	242 x 140 mm	260 x 230 mm	360 x 230 mm	440 x 232 mm
Max. stage loading	10 kg	10 kg	20 kg	20 kg	15 kg
Mass	70 kg	74 kg	140 kg	148 kg	154 kg

QI-B models

Model	QI-B1010B	QI-B2010B	QI-B2017B	QI-B3017B	QI-B4020B
No.	361-832-1EU 361-832-1E	361-833-1EU 361-833-1E	361-834-1EU 361-834-1E	361-835-1EU 361-835-1E	361-836-1EU 361-836-1E
Travelling range (X-, Y-axis)	100 x 100 mm	200 x 100 mm	200 x 170 mm	300 x 170 mm	400 x 200 mm
Travelling range (Z-axis)	100 mm	100 mm	100 mm	100 mm	100 mm
Stage glass size	170 x 170 mm	242 x 140 mm	260 x 230 mm	360 x 230 mm	440 x 232 mm
Max. stage loading	10 kg	10 kg	20 kg	20 kg	15 kg
Mass	70 kg	74 kg	140 kg	148 kg	154 kg



Field of view with QI-A 0.2X magnification



Field of view with QI-B 0.5X magnification

Specifications

Measuring Mode	High-resolution mode and Normal mode
Accuracy ⁽¹⁾	$U_{1(x,y)} = (5+8L/100) \mu\text{m}$ L = measured length (mm)
CCD Camera	1.3 Megapixels colour CCD camera
Optical system magnification ⁽²⁾	QI-A models : 0.2X QI-B models : 0.5X
Optical system working distance	90 mm
Optical system depth of focus	High-resolution mode : $\pm 0.6 \text{ mm}$ Normal mode : $\pm 11 \text{ mm}$ (QI-B models : $\pm 1,8 \text{ mm}$)
Illumination	- Contour - Coaxial - 4-quadrant LED ring light

⁽¹⁾ According to Mitutoyo inspection method

⁽²⁾ Double telecentric system

Optional accessories

No.	Description
937179T.	Footswitch
12AAJ088.	Reinforced footswitch

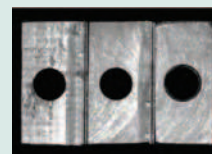


Image of a stepped block using the double telecentric objective showing the orthographic view produced.

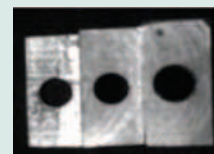


Image of the same object using a standard objective



Refer to the Quick Image brochure