

# Quick Vision APEX / HYPER

## Series 363

### CNC Vision Measuring System

- Floor-standing CNC Vision Measuring Machine.
- Four-colour LED coaxial lighting.
- Programmable 4-quadrant, 4-colour LED ring light.
- Pattern focus function (refer to Quick Vision Accel page).

### Additional Specifications

- Available factory option(s)
- **Series 364**  
Touch Probe (TP)
  - **For QV APEX**  
Power Zoom lens, Colour CCD camera.
  - **For QV APEX and QV HYPER**  
Laser Auto Focus (LAF)  
Touch probe (TP).

### Laser Auto Focus (LAF)

Refer to the Quick Vision Accessories page.

Additional objective lenses  
Refer to the Optical Accessories page for Quick Scope / Quick Vision

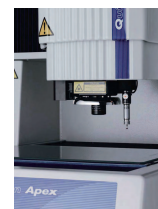
### Optional accessories

| No.                       | Description                   |
|---------------------------|-------------------------------|
| <b>Calibration charts</b> |                               |
| 02AKN020.                 | Calibration chart only        |
| 02ATN695.                 | Calibration chart with holder |
| <b>Machine stands</b>     |                               |
| 02ATN332.                 | Machine Stand for QV-302      |
| 02ATN333.                 | Machine Stand for QV-404      |
| 02ATN334.                 | Machine Stand for QV-606      |

Refer to the Optical Accessories page for Quick Scope / Quick Vision for more information on calibration charts.



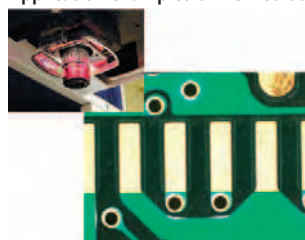
RGB illumination



Touch Probe option

### QV Apex 302 PRO

Application examples of RGB Colour Illumination :



1 Resist aperture dimension  
2 Resist

Dimension of resist aperture on a printed circuit board



Boundary between chrome and gold-plated surfaces

### PRO / PRO2 / PRO3 models

| Type No.                       | Quick Vision PRO<br>QV PRO  | Quick Vision PRO3<br>QV PRO3  |
|--------------------------------|---|---|
| Optical system                 | Programmable Power Turret (PPT)   | Programmable Power Turret (PPT)   |
| Magnification (optical system) | 1X ; 2X ; 6X  | 1X ; 2X ; 6X  |
| Sensor                         | High-sensitivity CCD B&W 380.000 pixels   | High-sensitivity CCD Colour 270,000 pixels  |
| Illumination                   | LED :<br>- Contour (White)<br>- Coaxial (RGB)<br>- 4-quadrant PRL (RGB)<br>(PRL : refer to the QV-ELF page) | Halogen<br>(Cold light via optical fibre)<br>- Contour<br>- Coaxial<br>- 4-quadrant PRL<br>(PRL : refer to the QV-ELF page) |



Refer to the Quick Vision brochure