

Quick Vision ACCEL

Series 363

CNC Vision Measuring System

Moving-bridge type structure

- The moving bridge type structure results in a fixed stage. This facilitates a more simplified design of the workpiece fixture, resulting in a significant reduction in the man-hours required for fixture fabrication and inspection.
- Machine stand included.
- **Factory options** : Laser Auto Focus (LAF), Touch probe (TP).



Touch Probe option



QV Accel 1212 PRO3

Model PRO	QV ACCEL 808 PRO	QV ACCEL 1010 PRO	QV ACCEL 1212 PRO	QV ACCEL 1517 PRO3
No.	363-311EU	363-331EU	363-351EU	363-371EU
Model PRO3	QV ACCEL 808 PRO3	QV ACCEL 1010 PRO3	QV ACCEL 1212 PRO3	QV ACCEL 1517 PRO3
No.	363-313EU	363-333EU	363-353EU	363-373EU
Range (X-, Y-, Z-axis)	800 x 800 x 150 mm	1000 x 1000 x 150 mm	1250 x 1250 x 100 mm	1500 x 1750 x 100 mm
Accuracy E1(x,y) ⁽³⁾	(1,5+0,3L/100) µm	(1,5+0,3L/100) µm	(2,2+0,3L/100) µm	(2,2+ 0,3L/100) µm
Max. drive speed X, Y-axis	400 mm/s	400 mm/s	300 mm/s	300 mm/s
Stage glass size	883 x 958 mm	1186 x 1186 mm	1440 x 1440 mm	1714 x 1968 mm
Max. stage loading	20 kg	30 kg	30 kg	30 kg
Mass	2570 kg	2950 kg	3600 kg	4500 kg

⁽³⁾ According to Mitutoyo inspection method L = measured length (mm)

NB : All models are orderable with the "E" suffix for UK only use (example 363-311E)
For a description of PRO and PRO3 models, refer to QV-APEX



Quick Vision brochure on request

Specifications

Resolution	0,1 µm
High-sensitivity CCD camera	PRO models : B&W PRO3 models : Colour
Contour illumination	PRO models : LED, White PRO3 models : Halogen (cold light)
Coaxial illumination	PRO models : LED, RGB PRO3 models : Halogen (cold light)
4-quadrant PRL ⁽¹⁾ illumination	PRO models : LED, RGB PRO3 models : Halogen (cold light) (1) PRL : refer to the QV-ELF page
Pattern Focus ⁽²⁾	PRO models : LED PRO3 models : Halogen (cold light) (2) Pattern focus : refer to the QV-ACCEL page
Magnification change system	Programmable Power Turret (PPT) 1X ; 2X ; 6X

Additional Specifications

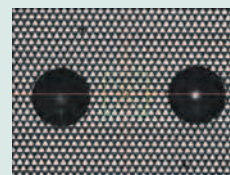
Factory option - Touch Probe (TP)
- Laser Auto Focus (LAF)
Refer to Quick Vision accessories

Additional objective lenses Refer to the Optical Accessories page
for Quick Scope / Quick Vision

Optional accessories

No.	Description
02AKN020.	Calibration chart only
02ATN695.	Calibration chart with holder

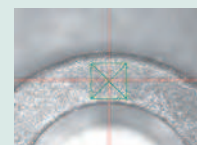
Refer to the Optical Accessories page for Quick Scope / Quick Vision for more information on calibration charts.



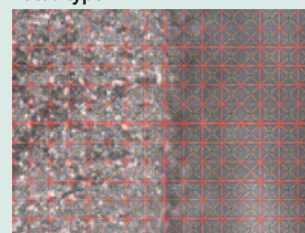
Auto Focus Tool : type Pattern Focus (focusing for option difficult surfaces such as mirrors, polished surface clear glass).



Auto Focus Tool : Edge Focus type



Auto Focus Tool : Surface Focus type



Auto Focus Tool : Multi-point Auto Focus type