

QV HYBRID Type 1

Series 365 - CNC Vision Measuring System

- The Quick Vision Hybrid Type 1 is a multisensor machine which allows vision measurement with a CCD camera and high-speed scanning by applying a vision measurement unit in parallel with a non-contact displacement sensor.
- The focusing point method minimises the difference in the measuring face reflectance and realises high measurement reproducibility.
- The double pinhole method (less directivity) is employed as the measurement principle.



QVH1 APEX 404 PRO



Quick Vision Hybrid system - Type 1

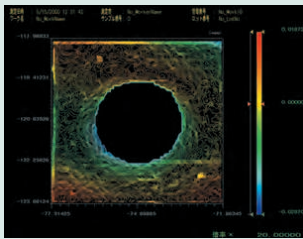
The scanning laser system for Quick Vision Hybrid adds 3D profiling capability. The laser probe with 0.01 μm resolution Laser HoloScale continuously scans the workpiece surface and gathers coordinate data, enabling the evaluation of surface contours, peak heights, etc. The double pinhole detection method is adopted to avoid measurement being affected by the colour, reflection factor, etc., of the surface.

Available for QV APEX ; QV STREAM PLUS ; QV HYPER and QV ACCEL models.

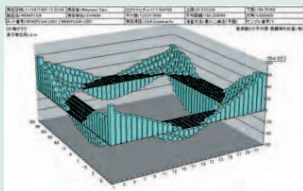
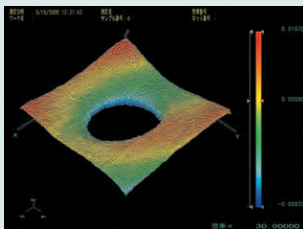
Specifications

Factory option

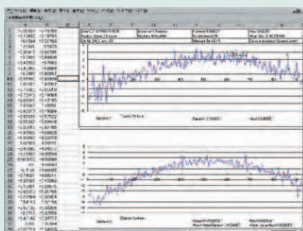
- Colour CCD camera
With halogen illumination



Curved-form analysis (MSHAPE-QV)
2D / 3D contour lines display
2D / 3D unfiltered profile display
Shadowgraph display
Curved plane analysis
Unfiltered profile analysis, etc.



Data processing (QV Graph)
3D bar chart display
3D surface chart display
2D continuous cross-section graph display



Quick Vision brochure on request