

Quick Vision Accessories

Accessories for Quick Vision

Laser Auto Focus Function TTL (Through The Lens) ⁽¹⁾

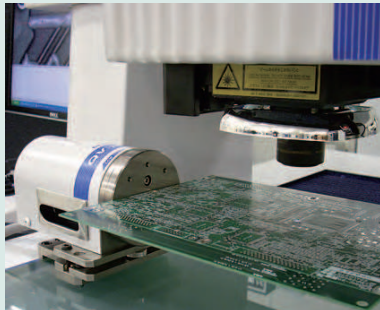
For QV-ELF, QV-APEX, QV-HYPER, QV-STREAM PLUS, QV-ACCEL, QV-ULTRA

The system can be equipped with the Laser Auto Focus unit that allows stable, high-speed measurement in the Z-axis. This unit provides stable measurement results due to the double pin-hole method adopted in the detection system.

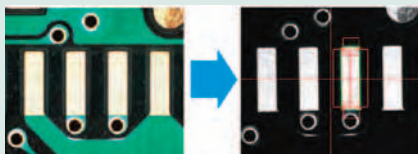
Specifications

QV Index Head Automatic multi-plane measurement is possible with the optional index table

Max. workpiece diameter 140 mm
Max. workpiece mass 2 kg
Min. rotation angle 0.1°
Positioning accuracy ±0.5°
Max. rotation speed 10 rpm



QV Index Head

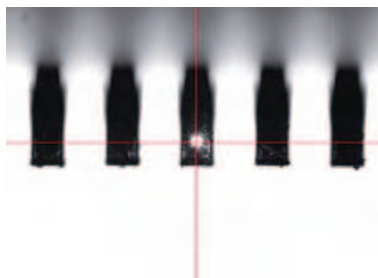


RGB colour filtering unit

The colour filtering unit function can be added to the vertical reflected illumination or programmable ring light in Quick Vision models that use a halogen light source and B/W CCD sensor only.

This function enhances the visibility of low-reflection surfaces on coloured workpieces, facilitating edge detection. This function can also be retrofitted to a conventional Quick Vision.

In addition, a yellow filter enables vision measurement in the yellow light region, which provides high sensitivity.



Laser spot of laser auto-focus system (LAF)



Coaxial laser auto-focus (LAF)



Measurement example : Height of leads on a QFP package

LAF ⁽¹⁾ (Laser Auto Focus)

No.	Objective	Measurement principle	Laser spot diameter	Repeatability (σ)
LAF	QV-HR2.5X	Double pinhole method	3 μm	0.4 μm

⁽¹⁾ Factory option

Other Accessories

Machine Stands

No.	Model	Type of QV
02ATP623	Machine stand for QV-ELF	ELF
02ATN332	Machine stand for QV-302	APEX ; HYPER ; STREAM PLUS
02ATN333	Machine stand for QV-404	APEX ; HYPER ; STREAM PLUS
02ATN334	Machine stand for QV-606	APEX ; HYPER ; STREAM PLUS