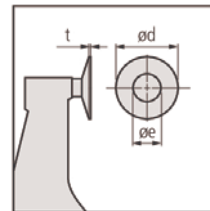


Disc Micrometer

Series 123

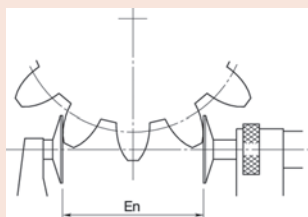
- For measuring base tangent length and module (0,5 to 6) on gears, and recessed features that are difficult to reach with a standard micrometer.



123-101

Specifications

Accuracy	Refer to the list of specifications
Graduation	0,01 mm or 0.001"
Scales	Thimble and sleeve satin chrome finish, ø18 mm
Flatness	1 µm for models up to 100 mm 1,6 µm for models over 100 mm
Parallelism	4 µm for models up to 50 mm 6 µm for models up to 100 mm (5+L/75) µm for models over 100 mm L = max. range (mm)
Frame	Enamelled
Measuring spindle	ø6,35, spindle pitch 0,5 mm, with spindle lock
Measuring force	5-10 N
Measurable module	0.5-6 (0.7-11 : models over 100 mm)
Delivered	Including box, setting standard (from 25 mm upward), key



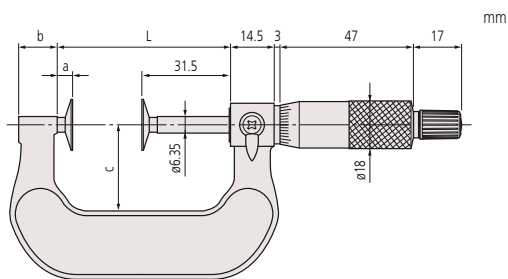
Root tangent length of gear (En)

Metric

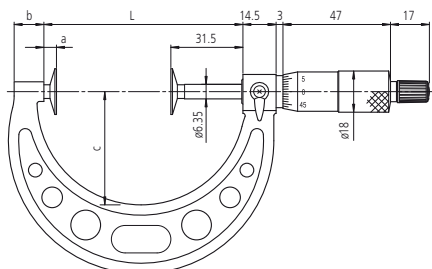
No.	Range	Accuracy	L mm	a mm	b mm	c mm	d mm	e mm	t mm	Mass g
123-101	0-25 mm	±4 µm	37.5	6	14	25	20	8	0.7	200
123-113	0-25 mm	±4 µm	39.7	4.5	9.2	25	20	8	0.7	200
123-102	25-50 mm	±4 µm	62.5	6	14	32	20	8	0.7	250
123-114	25-50 mm	±4 µm	65.6	5.4	11	31	20	8	0.7	250
123-103	50-75 mm	±6 µm	87	5.5	11	49	20	8	0.7	300
123-115	50-75 mm	±6 µm	90.7	5.5	12.2	50	20	8	0.7	300
123-104	75-100 mm	±6 µm	112	5.5	11	63	20	8	0.7	375
123-116	75-100 mm	±6 µm	112.5	5.5	13.5	60	20	8	0.7	375
123-105	100-125 mm	±7 µm	137.5	6	12	79	30	12	1	520
123-106	125-150 mm	±7 µm	162.5	6	15	94	30	12	1	570
123-107	150-175 mm	±8 µm	187.5	6	16	106	30	12	1	730
123-108	175-200 mm	±8 µm	212.5	6	15	118	30	12	1	890
123-109	200-225 mm	±8 µm	237.5	6	14	130	30	12	1	1,000
123-110	225-250 mm	±9 µm	262.5	6	14	143	30	12	1	1,200
123-111	250-275 mm	±9 µm	287.5	6	15	156	30	12	1	1,410
123-112	275-300 mm	±9 µm	312.5	6	15	169	30	12	1	1,680

Inch

No.	Range	Accuracy	L mm	a mm	b mm	c mm	d mm	e mm	t mm	Mass g
123-125	0-1"	±0.0002"	37.5	6	14	25	20	8	0.7	200
123-126	1-2"	±0.0002"	62.5	6	14	32	20	8	0.7	200
123-127	2-3"	±0.0003"	87	5.5	11	49	20	8	0.7	250
123-128	3-4"	±0.0003"	112	5.5	11	63	20	8	0.7	250



Models up to 50 mm



Models over 50 mm