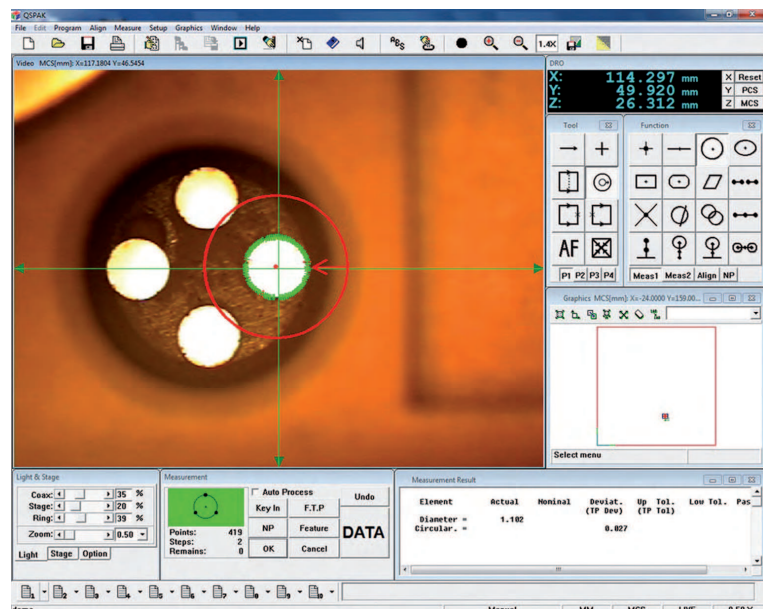


Software for Vision Measuring Machines

QIPAK / QSPAK

No.	Software for
QIPAK	Quick Image models
QSPAK	Quick Scope models

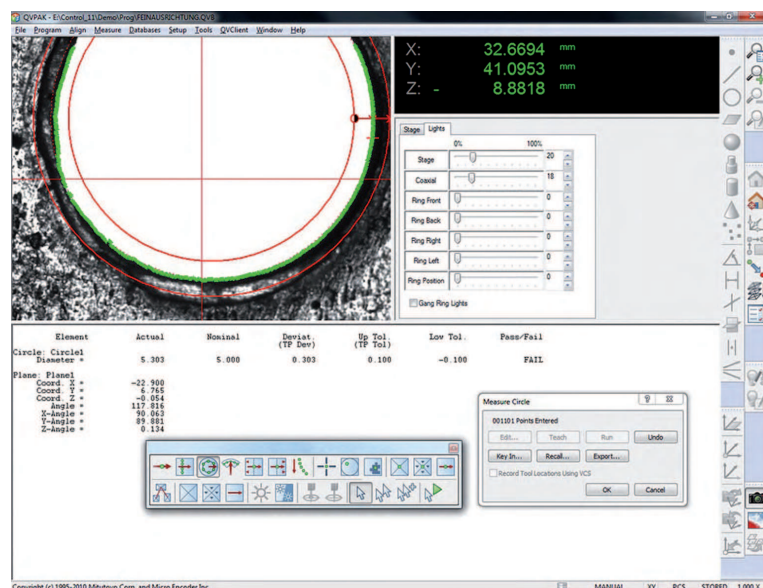


QSPAK

- Single mouse-click edge-detection tools; very easy to use.
- Template tools for comparative analysis.
- Video image capture.
- Stage navigation function for CNC machines gives improved measurement cycles.

QVPAK

No.	Software for
QVPAK	Quick Vision Models



QVPAK

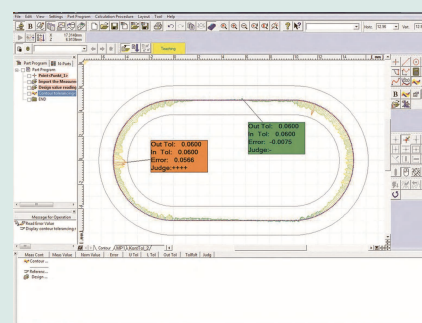
- QVPAK controls multiple sensors: CCD, Touch Probe, Continuous scanning devices, Special UMAP or LNP Probes.
- Powerful mathematical algorithms are provided that help to detect difficult edges via noise filters (similar to morphological filters) and advanced detection tools that take into account the texture of the target surface.
- 3D graphic display or measuring planes display with the QVClient QVGraphic
- QVPAK also offers various "QVClients" (standard), real assistants for users (Programming mode) or operators (Production mode), such as QVSmartEditor, QVNavigator.

Specifications

QIPAK/QSPAK Additional software (optional)	MEASURLINK (refer to the Measurlink page) QS CAD-IMPORT/EXPORT FORMPAK-QV ⁽¹⁾
--	---

For Quick Scope Manual only :
BALL END MILL

For Quick Scope CNC only :
EASYPAG

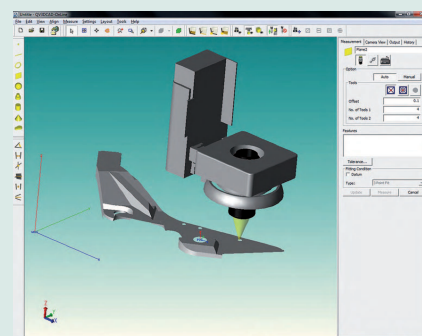


(1) FORMPAK-QV

- Simple and easy-to-use 2D contour analysis.
- Graphic reports (geometry or scanning) edition.
- Allows measurement by comparison.
- For more information refer to FORMTRACEPAK.

Specifications

QVPAK Additional software (optional)	MEASURLINK (refer to page Measurlink) QV PARTMANAGER QV CAD-IMPORT/EXPORT QV 3D CAD Online ⁽²⁾ EASYPAG PAGPAK QV GEARPAK QV EIO FORMPAK-QV ⁽¹⁾
--	---



(2) QV 3D CAD-Online

- Automatic program generation from 3D CAD files issued from a CAD system (must be associated with a converter).



Vision Measuring Machines brochures on request