

# Data Management

## MeasurLink 7 Process Manager Standard Edition

Real-time monitoring of data as it is collected. Provides the QC/Production Manager with the perfect tool to organize and maintain a shop-wide quality program at a glance.

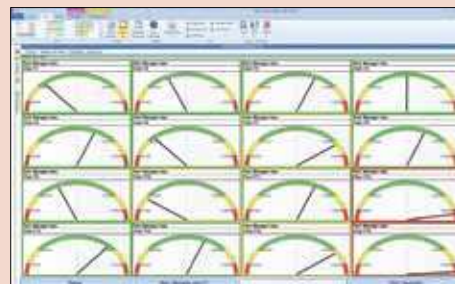
Process Manager provides a method for auditing the entire shop floor inspection activity from a single PC. Easily see process information without walking from one inspection area to another by viewing current production across all machines. Show clients your quality operation for the entire facility.

Quality Control personnel can choose to display only specific stations, parts, routines or even critical characteristics that they are responsible for. Establish Cpk thresholds for acceptability. Drill down for details on certain traceability, assignable cause, failed tests or serial numbers.

Various alerts are provided to recognize and stay up-to-the-minute on production problems. Display the easy-to-read charts and detailed statistics.

### • MeasurLink Process Manager

Displays snapshot windows of characteristics that are currently being collected in MeasurLink Real-Time. The data can be sorted by Station, Process, Capability or Timestamp.



### SPECIFICATIONS

Code No.	Description
64AAB182R	MeasurLink 7 Process Manager Standard Edition

## MeasurLink Gauge R&R

Measurement Systems Analysis

Designed according to standard ISO/TS 16949, Gauge R&R allows you to use the AIAG methods of study:

- Range
- Average and Range
- Average and Range including part variation
- Variance analysis
- Short method for attribute gauges
- Bias study
- Linearity study
- Stability study

Features :

Graphical analysis tools :

- Xbar/R chart
- Part by appraiser plot

### SPECIFICATIONS

Code No.	Description
64AAS941D	MeasurLink Gauge R&R

## MeasurLink Gauge Management

Gauge Inventory and Calibration Control

MeasurLink Gauge Management allows customers to build a complete gauge and fixture inventory. Calibration is made simple by supporting digital gauges for both, variable and attributive features. Achieve optimal calibration frequencies – set-up individual calendars with:

- Gauge in-service dates
- Calibration recall dates
- Gauge R&R dates

Features:

- Vendor contact lists
- User lists
- Print and archive calibration certificates
- Incremental response methods
- Customized gauge label printing

### SPECIFICATIONS

Code No.	Description
64AAS007D	MeasurLink Gauge Management